



Immigratie- en Naturalisatiedienst
Ministerie van Veiligheid en Justitie

Asylum Trends

Monthly Report on Asylum Applications
in The Netherlands and Europe

November 2013



Immigratie- en Naturalisatiedienst
Ministerie van Veiligheid en Justitie

Asylum Trends
Monthly Report on Asylum Applications in
The Netherlands and Europe
November 2013

13 December 2013

Colophon

Title	Asylum Trends
Subtitle	Monthly Report on Asylum Applications in the Netherlands and Europe, November 2013
Author	Ministry of Security and Justice Immigration and Naturalisation Service (IND) IND Information and Analysis Centre (INDIAC) Dr. H. Colijnlaan 341 2283 XL Rijswijk Postbus 5800 2280 HV Rijswijk INDIAC@ind.minvenj.nl

Contents

Colophon - 3

Asylum applications in The Netherlands

First asylum applications in The Netherlands - 5

Total asylum applications in The Netherlands - 6

Monthly first asylum applications in the Netherlands in 2013 - 7

First asylum applications in Europe (EU, Norway and Switzerland)

Monthly asylum applications in the EU, Norway and Switzerland, 2012-2013 - 8

Total asylum applications in the EU

Monthly asylum applications in the EU November 2012 to October 2013 - 8

First asylum applications in the Netherlands

Source: INDiGO

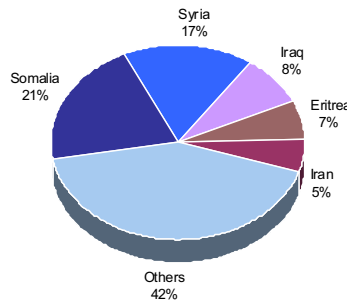
Top-10 last twelve months **first** asylum applications in the Netherlands

Total 2012	Nationality	2012		2013												Total 2013	Last 12 months
		Nov	Dec	Jan	Feb	Mar	Apr	May	Jun	Jul	Aug	Sep	Oct	Nov			
877	Somalia	55	111	312	135	147	252	190	308	289	220	353	259	328	2,793	2,904	
454	Syria	94	63	111	104	126	127	127	165	197	212	320	371	413	2,273	2,336	
1.391	Iraq	152	124	207	98	96	86	72	63	103	78	65	102	62	1,032	1,156	
424	Eritrea	26	36	64	58	53	31	26	27	76	124	120	164	132	875	911	
834	Iran	86	78	87	82	49	82	51	51	58	53	65	57	56	691	769	
1.022	Afghanistan	65	64	79	65	64	65	56	36	83	39	49	72	34	642	706	
343	Unknown	33	50	48	46	48	40	37	42	31	35	40	45	40	452	502	
137	Serbia	26	26	9	6	20	40	35	40	22	19	22	32	8	253	279	
743	Russia	41	20	30	42	18	8	7	19	16	15	31	35	27	248	268	
226	Egypt	22	24	13	7	20	15	14	16	16	12	28	16	28	185	209	
3.263	Others	303	343	345	332	315	297	288	272	297	274	403	406	372	3,601	3,944	
9.714	Total	903	939	1,305	975	956	1,043	903	1,039	1,188	1,081	1,496	1,559	1,500	13,045	13,984	

* To conceal the lowest figures, all values between 0 and 4 are replaced by an asterisk.

Top 5 Nationalities first applications last twelve months

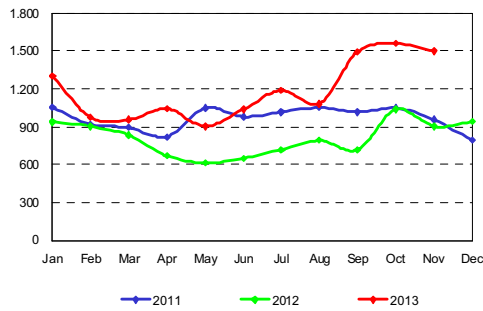
Period: December 2012 - November 2013
Number of first asylum applications: 13.984



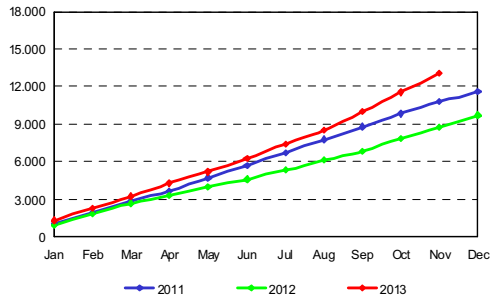
Top-10 first asylum applications in the Netherlands November 2013

Nationality		%
1 Syria	413	28%
2 Somalia	328	22%
3 Eritrea	132	9%
4 Iraq	62	4%
5 Stateless	61	4%
6 Iran	56	4%
7 Unknown	40	3%
8 Afghanistan	34	2%
9 Georgia	28	2%
10 Russia	27	2%
Others	319	21%
Total November 2013	1.500	100%
Percentage top 10		79%

First asylum applications in the Netherlands



Cumulative development of first asylum applications in the Netherlands



Total asylum applications in the Netherlands

Source: INDIGO

Top-10 last twelve months **total** asylum applications in the Netherlands
2012 2013

Total 2012	Nationality	Nov	Dec	Jan	Feb	Mar	Apr	May	Jun	Jul	Aug	Sep	Oct	Nov	Total 2013	Last 12 months
1.426	Somalia	80	127	340	156	162	267	205	334	307	233	365	271	335	2.975	3.102
575	Syria	103	68	113	106	130	128	129	166	197	215	322	378	415	2.299	2.367
1.884	Iraq	181	140	237	125	123	104	95	84	131	106	79	152	90	1.326	1.466
1.621	Afghanistan	106	90	141	120	125	128	139	96	151	88	103	142	89	1.322	1.412
1.194	Iran	112	107	149	114	86	116	84	86	90	87	93	75	83	1.063	1.170
481	Eritrea	30	38	70	63	56	37	28	31	86	132	124	168	139	934	972
550	Unknown	51	60	60	61	58	50	44	53	46	46	52	62	49	581	641
824	Russia	56	22	36	50	25	19	9	20	23	18	35	44	30	309	331
146	Serbia	29	26	11	6	20	40	35	41	29	19	22	33	8	264	290
199	Sri Lanka	16	46	30	27	22	10	10	19	14	10	20	22	20	204	250
4.270	Others	395	393	442	396	395	367	361	340	373	352	447	482	427	4.382	4.775
13.170	Total	1.159	1.117	1.629	1.224	1.202	1.266	1.139	1.270	1.447	1.306	1.662	1.829	1.685	15.659	16.776

* To conceal the lowest figures, all values between 0 and 4 are replaced by an asterisk.

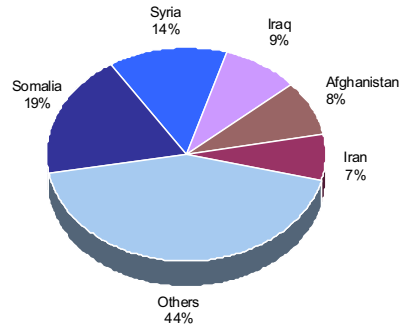
Top-10 total asylum applications in the Netherlands
November 2013

Nationality		%
1 Syria	415	25%
2 Somalia	335	20%
3 Eritrea	139	8%
4 Iraq	90	5%
5 Afghanistan	89	5%
6 Iran	83	5%
7 Stateless	61	4%
8 Unknown	49	3%
9 Russia	30	2%
10 Georgia	29	2%
Others	365	22%
Total November 2013	1.685	100%
Percentage top 10		78%

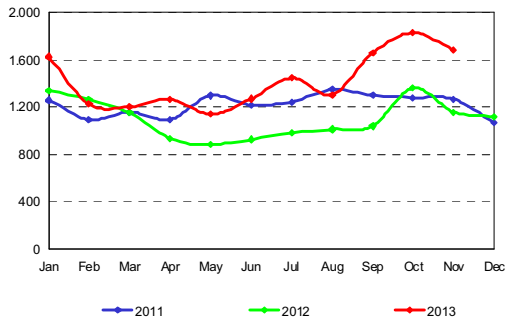
Top 5 Nationalities total applications last twelve months

Period: December 2012 - November 2013

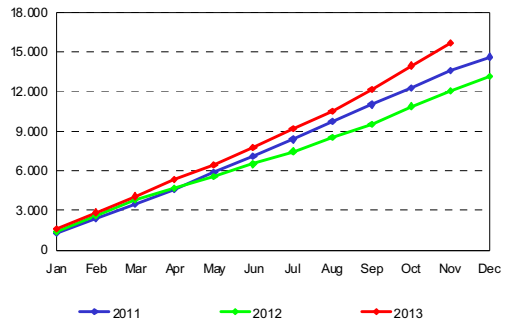
Number of total asylum applications: 16.776



Total asylum applications in the Netherlands



Cumulative development of total asylum applications in the Netherlands



Monthly First Asylum Applications in the Netherlands in 2013

Source: INDIGO

2012	Nationality	2013 Jan	Feb	Mar	Apr	May	Jun	Jul	Aug	Sep	Oct	Nov	Dec	Total
1.022	Afghanistan	79	65	64	65	56	36	83	39	49	72	34		642
16	Albania	*	*	*	*	*	*	5	*	*	8	7		40
28	Algeria	5	*	*	*	*	5	*	*	*	*	*		28
15	Angola	*	6	*	*	*	*	*	*	*	*	*		17
200	Armenia	23	13	11	13	25	6	14	5	13	29	14		166
71	Azerbaijan	*	14	7	*	7	5	*	5	5	13			67
33	Bangladesh	*	*	*	6	5	*	*	*	*	*	*		27
57	Belarus	12	*	*	*	6	*	5	*	*	9	9		57
68	Bosnia and Herzegovina	*	*	7	*	*	18	7	6	6	19	5		77
8	Burkina Faso	*	*	*	*	*	*	*	*	*	*	*		13
*	Burundi	*	*	*	*	*	*	5	*	5	*	*		14
34	Cameroon	5	*	*	*	*	*	*	*	*	*	*		16
154	China (including Hong Kong)	11	12	14	25	7	14	*	14	19	10	5		134
*	Colombia	*	*	*	*	*	*	*	*	*	*	*		12
25	Congo, the Democratic Republic of the	*	*	*	*	*	*	5	9	*	*	*		35
141	Congo, the Republic of the	21	25	7	12	10	*	8	7	14	9	15		132
75	Cote d'Ivoire	5	10	8	*	5	*	*	21	6	8	*		72
5	Cuba	*	*	*	*	*	*	*	*	*	*	*		8
*	Ecuador	*	*	*	*	*	*	*	*	*	*	*		5
176	Egypt	14	13	15	13	26	8	18	22	6	17	10		162
*	El Salvador	*	*	*	*	*	*	*	*	*	*	*		7
424	Eritrea	64	58	53	31	26	27	76	124	120	164	132		875
71	Ethiopia	15	*	14	5	*	7	6	9	9	*	8		82
25	Gambia	*	5	*	6	*	*	*	*	*	*	*		26
226	Georgia	13	7	20	15	14	16	16	12	28	16	28		185
25	Ghana	6	*	5	*	*	*	6	*	*	*	*		33
186	Guinea	9	21	18	17	16	12	10	15	13	14	10		155
*	Guinea-Bissau	*	*	*	*	*	*	*	*	*	*	*		8
13	India	*	*	*	*	*	*	*	*	*	*	*		16
834	Iran	87	82	49	82	51	51	58	53	65	57	56		691
1.391	Iraq	207	98	96	86	72	63	103	78	65	102	62		1.032
6	Israel	*	*	*	*	*	*	*	*	*	*	*		5
29	Jamaica	*	*	*	*	*	*	*	*	*	*	*		23
23	Kazakhstan	*	*	*	*	*	*	*	7	*	*	*		16
19	Kenya	*	*	*	*	*	*	*	*	*	*	*		7
59	Korea, Democratic People's Republic of	16	8	17	8	7	14	14	10	20	13	8		135
33	Kosovo	*	*	*	*	*	*	15	*	13	*	*		45
11	Lebanon	*	*	*	*	*	*	*	*	*	*	*		17
17	Liberia	*	*	*	*	*	*	*	*	*	*	*		7
96	Libyan Arab Jamahiriya	14	5	15	7	14	6	13	11	11	23	14		133
54	Macedonia	*	15	14	11	7	16	13	7	7	9	16		116
*	Malawi	*	*	*	*	*	*	*	*	*	*	*		5
30	Mali	6	13	9	12	7	*	*	*	*	*	*		56
110	Mongolia	*	*	6	14	6	11	11	*	9	14	10		91
24	Morocco	6	*	6	12	*	7	6	*	*	7	8		64
36	Myanmar	*	13	6	*	5	6	*	*	12	*	9		55
100	Nepal	6	*	*	*	5	*	*	8	7	12	5		58
*	Niger	*	*	*	*	*	*	*	*	*	*	*		8
106	Nigeria	16	13	10	6	8	*	18	13	14	18	10		130
150	Pakistan	23	15	9	6	*	10	6	8	22	7	8		118
51	Palestinian Territory, Occupied	8	5	7	5	*	*	7	5	35	10	6		93
743	Russia	30	42	18	8	7	19	16	15	31	35	27		248
9	Rwanda	*	*	*	*	*	*	*	*	*	*	*		10
26	Senegal	*	*	*	*	6	*	*	*	*	*	*		30
137	Serbia	9	6	20	40	35	40	22	19	22	32	8		253
92	Sierra Leone	9	9	9	*	6	7	10	7	14	7	10		91
877	Somalia	312	135	147	252	190	308	289	220	353	259	328		2.793
125	Sri Lanka	13	14	12	*	*	10	5	10	17	20	20		128
40	Stateless	9	*	*	11	*	*	9	16	18	62	61		194
121	Sudan	12	12	14	17	8	11	7	7	21	6	14		129
454	Syria	111	104	126	127	127	165	197	212	320	371	413		2.273
11	Tajikistan	*	*	*	*	*	*	*	*	*	*	*		6
5	Tanzania, United Republic of	*	*	*	*	*	*	*	*	*	*	*		11
12	Togo	*	*	*	*	*	*	*	*	5	*	*		13
*	Trinidad and Tobago	*	*	*	*	*	*	*	*	*	*	*		5
16	Tunisia	5	*	*	*	*	*	*	*	*	*	*		16
89	Turkey	5	9	6	5	*	*	12	*	9	*	6		59
111	Uganda	15	9	12	11	11	15	16	6	24	19	14		152
25	Ukraine	*	*	*	*	7	*	*	*	*	*	8		34
343	Unknown	48	46	48	40	37	42	31	35	40	45	40		452

* To conceal the lowest figures, all values between 0 and 4 are replaced by an asterisk.

First asylum applications in the EU, Norway and Switzerland 2012 / 2013

	2012	okt-12	nov-12	dec-12	jan-13	feb-13	mrt-13	apr-13	mei-13	jun-13	jul-13	aug-13	sep-13	okt-13	2013
Germany	64.530	10.195	9.000	4.880	7.330	5.805	5.580	7.540	7.475	8.410	9.515	9.500	11.460	12.940	85.555
Sweden	43.930	5.515	4.570	4.090	3.805	2.970	2.970	3.060	3.085	2.980	4.130	4.805	7.770	7.915	43.490
France	54.290	5.680	4.650	5.315	4.475	4.945	5.140	5.210	4.460	4.945	5.480	4.400	4.400	^	43.455
United Kingdom	27.970	2.860	2.760	2.265	2.405	2.265	2.305	2.450	2.365	2.375	2.690	2.325	2.545	^	21.725
Italy	17.185	2.170	1.985	1.270	1.690	1.240	1.920	1.830	1.770	2.210	2.475	2.550	2.485	^	18.170
*Hungary	2.155	320	260	220	300	670	1.350	1.965	3.335	4.115	2.190	1.140	1.075	^	16.140
Poland	9.175	1.205	945	970	615	700	1.280	1.915	2.855	2.295	1.485	880	710	535	13.270
*Austria	17.445	2.125	1.530	1.250	1.210	1.190	1.195	1.405	1.445	1.805	1.805	1.355	1.345	^	12.755
Netherlands	9.665	1.040	905	935	1.305	975	955	1.040	900	1.035	1.185	1.075	1.495	1.560	11.525
Belgium	18.455	1.735	1.395	1.355	1.190	1.025	955	905	900	865	1.095	985	1.240	1.090	10.250
Denmark	6.080	610	645	600	750	560	575	545	480	505	610	680	650	720	6.075
Greece	9.575	1.255	1.030	850	755	705	610	745	595	530	760	575	630	^	5.905
Bulgaria	1.235	190	200	255	245	215	410	250	275	410	435	695	940	1.230	5.105
Spain	2.360	230	245	160	270	425	415	385	430	435	410	290	345	^	3.405
Finland	2.920	300	320	220	250	200	225	225	210	215	255	320	330	^	2.230
Malta	2.060	40	335	60	25	20	60	160	130	55	435	740	290	^	1.915
Romania	2.420	155	75	55	120	85	115	125	130	100	170	95	^	^	940
*Croatia	^	^	^	^	165	145	170	105	95	40	45	50	80	^	895
Luxembourg	1.995	165	115	65	75	70	70	90	65	85	95	75	110	^	735
Ireland	935	105	70	70	80	80	65	90	80	70	70	65	80	^	680
Cyprus	1.585	150	130	85	95	130	75	70	75	^	70	95	^	^	610
Czech Republic	515	60	35	45	45	30	50	35	40	35	40	65	30	^	370
Portugal	290	10	25	20	25	25	25	70	25	35	40	30	55	^	330
Slovenia	260	30	25	50	50	15	30	20	30	20	15	15	15	20	230
Slovakia	550	60	50	45	15	15	15	25	35	35	20	35	5	^	200
Lithuania	555	35	50	70	20	25	15	15	10	25	0	45	10	^	165
Latvia	190	10	15	5	5	5	15	15	10	10	35	30	25	^	150
Estonia	75	5	0	5	10	10	5	10	15	0	10	0	5	5	70
Total EU-28	298.400	36.255	31.365	25.210	27.325	24.545	26.595	30.300	31.320	33.640	35.565	32.915	38.125	26.015	306.345
Norway	9.315	960	835	840	940	650	810	765	735	885	1.225	1.565	1.330	1.040	9.945
Switzerland	25.960	2.215	2.190	1.465	1.955	1.630	1.660	1.880	1.515	1.415	1.670	1.420	^	^	13.145
Total EU-28 + NO/CH	333.675	39.430	34.390	27.515	30.220	26.825	29.065	32.945	33.570	35.940	38.460	35.900	39.455	27.055	329.435

Situation by December 10, 2013. Data sorted by total in 2013. Data are rounded to closest 0 or 5. Source: Eurostat

Data excludes applications from EU citizens.

Data concerns first applications, except for countries with an *. These countries only provide total applications.

^ Data not yet available

Total asylum applications in the EU from November 2012 to October 2013

	nov-12	dec-12	jan-13	feb-13	mrt-13	apr-13	mei-13	jun-13	jul-13	aug-13	sep-13	okt-13	Total
Syria	3.300	2.700	3.385	2.570	2.645	2.675	2.715	2.960	3.575	4.030	6.525	6.130	43.210
Russia	2.745	2.785	2.655	2.615	3.175	4.905	6.375	5.565	4.280	3.220	2.730	1.415	42.465
Afghanistan	2.440	2.070	2.215	1.865	1.910	1.960	2.095	2.085	2.205	1.865	2.085	1.405	24.200
Pakistan	2.110	1.550	1.480	1.340	1.510	1.995	1.890	2.095	2.235	1.840	1.685	530	20.260
Serbia	2.345	1.060	1.205	1.145	985	1.140	970	1.220	1.945	2.240	2.710	2.765	19.730
Kosovo	1.185	1.085	1.090	1.130	1.165	1.825	2.710	3.800	2.255	1.350	1.440	690	19.525
Somalia	1.485	1.260	1.395	905	1.195	1.425	1.270	1.655	1.865	1.765	1.945	1.295	17.460
Iran	1.500	1.090	1.385	955	935	1.255	1.045	965	1.040	950	1.035	835	12.990
Eritrea	995	580	735	515	630	490	500	535	1.380	1.850	1.920	1.625	11.755
Iraq	1.155	850	1.140	810	800	835	690	735	975	860	1.020	840	10.710
Others	15.270	12.570	13.655	13.435	14.395	14.840	13.935	15.330	17.395	16.380	19.440	11.860	178.505
Total	34.530	27.600	30.340	27.285	29.345	33.345	34.195	36.745	39.150	36.350	42.535	29.390	400.810

Situation by December 10, 2013. Data sorted by total from November 2012 to October 2013. Data are rounded to closest 0 or 5. Source: Eurostat

Data excludes applications from EU citizens.

Data concerns total applications.



IND:
*dé toelatingsorganisatie
van Nederland*